



Welcome to the Aurora Sportsmen's Club Membership Online Orientation

**✓ Please be advised that there will be a quiz
on the contents of this orientation during the
Board Member interview**

New Member Process

You are beginning Step #2



Step #1
Online
Tour



Step #2
Online
Orientation



Step #3
Board
Member
Phone
Interview



Step #4
Online
Range
Orientation



Step #5
Live Fire
Range
Safety Check



Step #6
Payment &
Badging

Agenda

- Organization
- Membership
- Guests
- Activities
- Communications
- Getting Around the Property
- Club Rules



The Aurora Sportsmen's Club



- Oldest and largest private shooting sports facility in northern Illinois.
- Founded in 1948 in Sugar Grove and moved to Waterman in 2009.
- Objectives: Promote Shooting Sports, Education, Conservation
- Tradition of Community Service

Club Structure



- This is an **all volunteer** club.
- Only staff: Facilities manager, part-time bookkeeper and trap pullers.
- ASC is a community of members, not a country club or service provider.
- ASC is a 501(c)(7) not-for-profit Illinois corporation.

Organization - All Volunteers

There are a total of 16 Directors, consisting of 4 “Officer Directors” and 12 “Non-Officer Directors”

Four Officer Directors

The President, Vice President, Treasurer and Secretary are elected to 2-year terms with staggered expirations.

Twelve Non-Officer Directors

Four directors are elected each year, to 3-year terms, with staggered expirations.

Committees

Included are the “Advisory”, “Board”, “Audit” and “Finance & Budget” Committees. These committees have specific functions and rules as described in the Constitution.



Membership Includes

- Primary Member: Must be age 18 or older, in possession of a valid FOID if IL resident, legal US resident.
- Family Membership:
 - Primary Member
 - Spouse
 - Children under 18
- Children up to age 23 living at home or in college (as non-paying guests).
- Accompanied guests are welcome for a daily fee.



Guest Policies

- Guests and family members 18 years and up participating or observing must sign a waiver form each day.
- Guests who use the facilities, handle a firearm or bow must wear a single-use, one day guest wristband (\$10 pass.)
- Where to get passes? 3 free per year. Unlimited can be purchased.
- Not required for: Member's spouse, children under 18 or up to 23 living at home or in college, paid Shotgun Sports Games, Public Events, Active Duty US Military.
- Guests must remain with the Member and must follow rules.
- Three (3) shooting guests permitted at one time.
- Wristbands can be purchased in advance – do not expire.
- Guest activity is limited. Read the Range Safety Rules.

Membership Costs

- 2025 First year costs:
 - \$320 Initiation fee.
 - Dues are \$280 per year prorated to month you join
 - Total Due in 2025 (full year) = \$575 (\$600 initiation/dues - \$25 app fee)
 - \$25 for spouse independent access (badge, keycard, key)
- The 2025 assessment for club development: \$180 per year or \$15 per month. New members joining in 2025 are not subject to assessment in 2025.
- Ten volunteer work hours in the first 12 months of membership. Five hours prorated for remainder of second year. Five hours yearly after that.

Volunteering - Lynn Pavetto

- Join/Support a Department
- Help run a match or event.
- Work Parties
- Member Forum – Volunteer Corner
- Newsletter and mid-month email, Signup.com
- Clean up on your own
- Contact the Volunteer Coordinator
Volunteering@AuroraSC.org
- Report your Volunteer Hours
- Buy-out Option – The 2025 hourly rate is \$20 per hour for unfulfilled work hours.

Volunteering - Lynn Pavetto

- Service Hour Requirements:
 - New members are required to fulfill 10 hours during their first 12 months
 - Regular members are required to fulfill 5 hours during the service/work hour year
 - The service/work hour year is defined as October 1 through September 30
 - New member second year hours are prorated to the end of service/work hour year
- If you join in:

March, April, May	12 Hours due by Sept 30th of following year
June, July	11 Hours due by Sept 30th of following year
August, September	10 Hours due by Sept 30th of following year

CENTER OF EXCELLENCE

- Local Instructors Providing Group and Private Training
 - Sportsman's Resource Training
 - Spartan Tactical Training Group
 - Safeside Tactical
 - Lions Defense
 - Carry Trainer
 - Alpha Koncepts
 - Vanilla Gorilla Security
 - American Civil Defense Company
 - We the People FTA
 - READYAIMSHOOT
 - Safer USA
 - A-Way Training
 - Six T LLC
 - Five Rings Firearms Training

ASC also hosts national traveling professional training instructors. More info at: <https://aurorasc.org/departments/guest-instructor-program>

Club Activities

- Outdoor Rifle/Pistol Ranges
- Skeet, Trap, Double Trap, Manual Throwers, 5-Stand, Wobble Trap, Pyramid Wobble, Springing Teal, Patterning Board
- Archery Ranges and 3D Targets
- 15 Station Sporting Clays Course
- Classes and Matches
- Fishing and Hunting: Stocked Ponds and Wild Game
- Public Events
- Member Access



Action Shooting Sports - Kris Kline



- 2 Gun
- 3 Gun
- Centerfire Practical Precision Rifle (PRS)
- Cowboy Action
- DMR (Designated Marksmen Rifle)
- IDPA
- Member Exclusive Night Shoot Events and Matches
- Outlaw Steel Challenge
- Practical Rifle
- Rimfire NRL 22 and Rimfire PRS
- Tactical Technologies
- TASC (Train ASC) Defensive Members only Training
- USPSA
- Zombie Shoot
- <https://aurorasc.org/departments/action-shooting-sports>

Precision Sports - Jim Stob

- Bench Rest
- F- Class Smallbore
- Bullseye
- F-Class Mid-range Centerfire
- Club Pistol Matches
- <https://aurorasc.org/departments/rifle-pistol>

Shotgun Sports - Dean Diddell

- Trap
 - 3 regulation trap and double trap fields, a wobble trap field and a pyramid wobble trap field
- Springing Teal
 - Permanent field set up for Springing Teal with wireless transmitter that can be voice activated
- 5-Stand
 - Uses a wireless transmitter that can be voice activated
- Skeet
 - 2 regulation skeet fields
- Sporting Clays Course
 - 15-station, 100-target Sporting Clays course with multiple shooting positions to accommodate beginner, intermediate and advanced shooters
- Manual Clays Machines and Shotgun Patterning Board
- Special Events throughout the season, frequent night shoots, training classes available, youth events, and an annual Pig Roast.

Board and Membership Meetings

- Board of Director Meetings

- Regular Board of Director meetings are held monthly at a time and place convenient to the Board of Directors and shall be open to all members.
- Special Board of Director meetings can be called as needed.
- The Annual Board of Director meeting is held following the annual membership meeting to certify the results of the elections.

- General Membership Meetings

- Annual membership meeting is held on the fourth Saturday of March each year. The location of the meeting will be within 50 miles of Waterman, with the time and location to be determined by the Board of Directors.
- Regular membership meetings are held on the fourth (4th) Thursday of each June, September and October; and on the third (3rd) Thursday of each December.
- Special membership meetings may be called at anytime by majority of the Board of Directors, or the President.

Important General Membership Meetings

- March Elections for:
 - ✓ Open Officer Positions
 - ✓ Open Director Positions

- October Vote on:
 - ✓ Assessments for the Following Year
 - ✓ Changes to Dues for the Following Year.



Identifying Members

➤ ID Cards

- ▣ **Red Card** - Probationary **First Year**
- ▣ **Blue Card** - Regular Member
- ▣ White Card - Family member
- ▣ **Gold Card** - Life Member
- ▣ **Orange Card** - Officers, Board, Departments
- ▣ Other – RSO Cards, Trainers, Contractors, Security Team, Medical Team


YOU MUST DISCLOSE YOUR NAME/MEMBER NUMBER AND SHOW YOUR ID BADGE WHEN ASKED TO DO SO BY ANOTHER MEMBER.

Member Communications

- Public Web Page and “Contacts” Tab
- Monthly “On Target” Newsletter via email
- Facebook **Page** – Public
- Facebook **Group** – Private (members only)
- Instagram
- Member Forum – Private
- “Blast” Email Messages
 - ASC does not sell or rent email lists
 - Respect member privacy

www.AuroraSC.org

[HOME](#) [NEWS](#) [LOCATION](#) [CONTACT US](#)

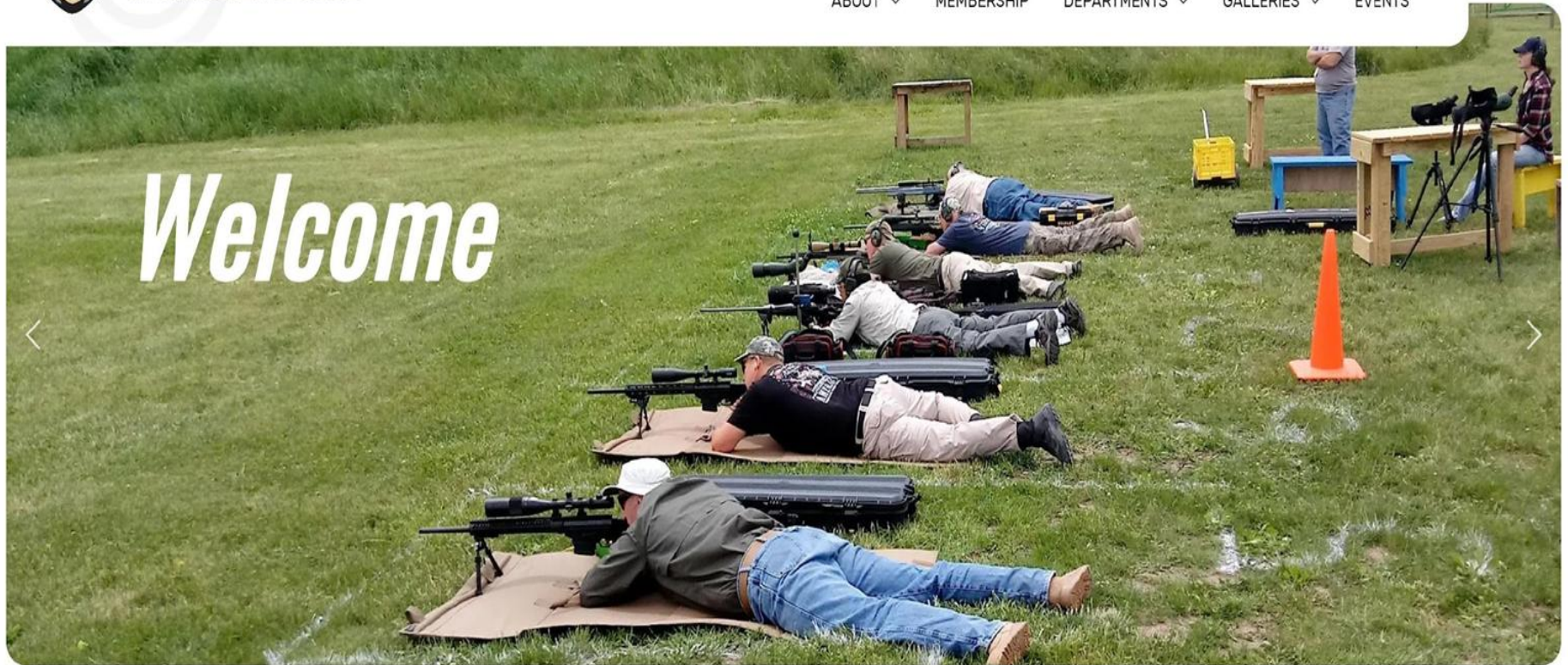
[MEMBERS ONLY](#) 



CHICAGOLAND'S **PREMIERE** SPORTS SHOOTING FACILITY.

[ABOUT](#)  [MEMBERSHIP](#) [DEPARTMENTS](#)  [GALLERIES](#)  [EVENTS](#)

Welcome



ASC Club Calendar

August 2025						
SUNDAY	MONDAY	TUESDAY	WEDNESDAY	THURSDAY	FRIDAY	SATURDAY
					1 Personal Best Firearms Training 800y Bay - SHARED Action Shooting Sports Lodge Booking	2 Action Shooting Sports Lodge Booking TASC Vehicle Counter Ambush Class (Ranges E6-E10, Vehicle Bay) Youth Clinics Syndicate Training Academy (E5) Trap, Skeet, 5-stand, Pyramid Wobble and Springing Teal (223) ASC Handgun Practice Session E4
3 Action Shooting Sports Lodge Booking Cowboy Action Shooting Match (Ranges E1-E3) 2 Gun (Ranges E6-E10) F-Class Match - 600 Yard Range Closed Trap, Skeet, 5-stand, Pyramid Wobble and Springing Teal (224) Hunter Safety Ed Class East Bldg	4 Carr Trainee 2 Day Class - Guest Instructor (E9)	5 Carr Trainee 2 Day Class - Guest Instructor (E9) Carr Trainee Guest Instructor Lodge Booking	6 Carr Trainee Guest Instructor Lodge Booking Carr Trainee 3 Day Class - Guest Instructor (E9) Sportmans Resource Training - Private Session (E8) F-Class League 4PM Shared Usage	7 Carr Trainee Guest Instructor Lodge Booking Carr Trainee 3 Day Class - Guest Instructor (E9) Homeland Security	8 Carr Trainee Guest Instructor Lodge Booking Carr Trainee 3 Day Class - Guest Instructor (E9) Friday Night Shoot	9 Practical Precision Rifle 3 Gun (Ranges E5 through E10) Alpha Concepts - Pistol Go Fast (Speed Skills) - (E1) Organized Bullseye Practice Trap, Skeet, 5-stand, Pyramid Wobble and Springing Teal (225) IDPA Skills Drills Practice Sessions (Range E4)
10 Action Instructor Practice/Test Day (Range E8 through E10) Benchmark F-Class 600 Yard - Range closed until 3pm Trap, Skeet, 5-stand, Pyramid Wobble and Springing Teal (226) Hunter Safety Ed Class East Bldg	11	12	13 F-Class League 4PM Shared Usage	14 Board Meeting	15	16 Practical Rifle (Ranges E6-E10) Sportmans Resource Training - Private Session (E1) Muzzleloading Shoot Trap, Skeet, 5-stand, Pyramid Wobble and Springing Teal (227) A - Way Training - LED, Defensive Pistol (E2) Overnight Stay IDNR Staff
17 Overnight Stay IDNR Staff NRL22 (Ranges E9 and E10) USPSA (Ranges E1 Through E7) Trap, Skeet, 5-stand, Pyramid Wobble and Springing Teal (228) Fox Valley Shooting - Precision Rifle (600S) Club Pistol Match	18 Safe Side Tactical - In Extremis Performance, Kane County Sheriff (E9)	19 Safe Side Tactical - In Extremis Performance, Kane County Sheriff (E9) Safe Side Tactical - In Extremis Performance, Kane County Sheriff (E8)	20 Safe Side Tactical - In Extremis Performance, Kane County Sheriff (E9) Safe Side Tactical - In Extremis Performance, Kane County Sheriff (E8) 600 yd Range Mowing F-Class League 4PM Shared Usage	21	22 Action Shooting Sports DMR Setup Day (Ranges West 600 and 200 yard bays) Shotgun Sports Lodge Booking	23 Shotgun Sports Lodge Booking Action Shooting Sports DMR August 2025 Match (Ranges West 600 and 200 yard bays) ASC Outlaw Steel Challenge (Ranges E1 through E5) Lions Defense Guest Instructor Classroom Booking (East Side Classroom) Lions Defense (E8) Bullseye League ASC Shotgun Clinic Trap, Skeet, 5-stand, Pyramid Wobble and Springing Teal (229) Shotgun Saturday Night Pig Roast
24 Shotgun Sports Lodge Booking Lions Defense (E8) Rimfire F Class August 2025 (Range E9) IDPA (Ranges E1 through E6) Trap, Skeet, 5-stand, Pyramid Wobble and Springing Teal (230) LE Training Video	25 600 yd Range closed for maintenance Homeland Security	26 600 yd Range closed for maintenance Homeland Security	27 DeKalb County Sheriffs Homeland Security F-Class League 4PM Shared Usage	28 Homeland Security 600 yd Range closed for maintenance	29 Homeland Security Spartan Tactical Guest Instructor Lodge Booking	30 Spartan Tactical Guest Instructor Lodge Booking Spartan Tactical 2-day 10th Annual Spartan Alumni Advanced Training Weekend (E9 Range) Trap, Skeet, 5-stand, Pyramid Wobble and Springing Teal (231)

Member Forum (Private and Moderated)

Posts may be deleted by moderators.

[HOME](#) [NEWS](#) [LOCATION](#) [CONTACT US](#)

MEMBERS ONLY ▾ 



CHICAGOLAND'S **PREMIERE** SPORTS SHOOTING FACILITY.

[ABOUT](#) ▾ [MEMBERSHIP](#) [DEPARTMENTS](#) ▾ [GALLERIES](#) ▾ [EVENTS](#)













[Index](#) [Recent Topics](#) [Unread](#) [New Topic](#) [No Replies](#) [My Topics](#) [Profile](#) [Search](#)



Forum ▸ [Index](#)

Board Categories ▾

Main Forum 585 topics

Category	Last Post
 General 256 topics (2 NEW) 	ASC Election by William E. Jones 6 hours 43 minutes ago
 Safety and Security 5 topics 	Re: Waivers for minors by Richard M. Hodel 3 months 4 weeks ago
 Classifieds 268 topics (35 NEW) 	28 Gauge Shells by Bill Katsopoulos 2 days 5 hours ago
 Membership 26 topics (1 NEW)  Membership Information and Questions	Re: Paying 2023 Dues by Steve Turner 2 days 23 hours ago
 Volunteer Corner 3 topics (2 NEW) 	2022 work hr reported wrong by Richard E. Gilman 1 month 3 weeks ago
 Web Site/Forum Issues 27 topics 	Re: Nevermind by George O. Smith 1 year 2 weeks ago

Member Forum Topics

The member forum covers a wide range of topics, including but no limited to:

Second Amendment

CCW

Lost and Found

Archery

Range Safety

Hunting and Fishing

Reloading

Zombie Shoot

Rifle/Pistol

Artillery

Shotgun Sports

Muzzle Loading

Training and Education

Action Shooting Sports

Rocketry

Volunteer Corner

Classifieds

Civilian Marksmanship Program

Note:

Forum Access takes a few days to set up after joining.

You'll receive an email message when this is complete.

ASC on Social Media

- Facebook

- Public Page <https://www.facebook.com/ASportsmensclub/>
- Members Only Group - <https://www.facebook.com/groups/113910455791>
 - ◆ Answer the member questions when requesting to join the FB Members Only Group, or you will be denied access
- Action Shooting Sports <https://www.facebook.com/ascshootingsports>
- 3Gun <https://www.facebook.com/asc3gun>
- Zombieshoot <https://www.facebook.com/TheZombieShoot/>

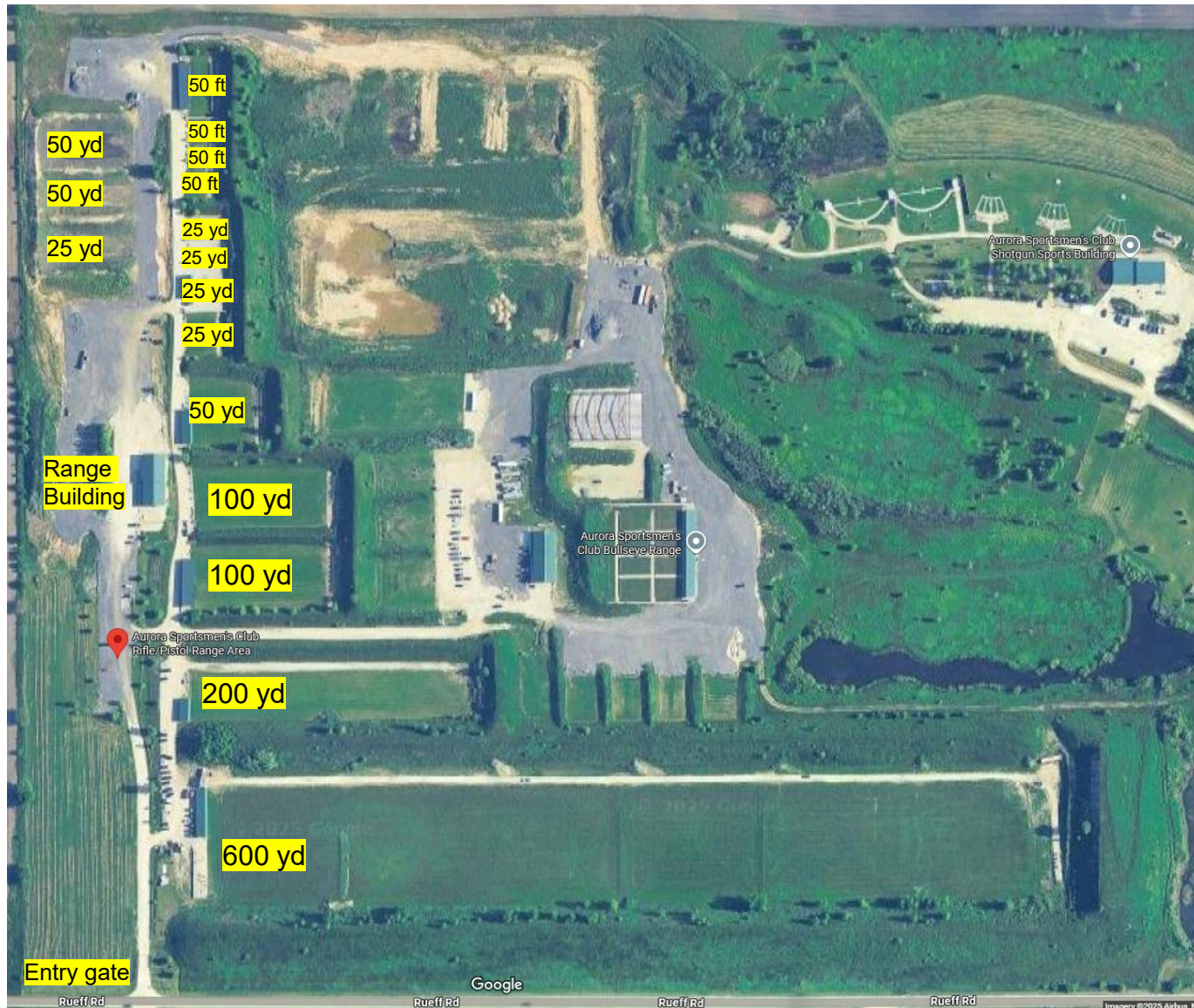
- Instagram

- https://www.instagram.com/aurora_sportsmens_club/
- <https://www.instagram.com/thezombieshoot/>

Aurora Sportsmen's Club Aerial View



West Side Rifle/Pistol Ranges



17 Ranges

(4) 50 ft ranges

- 1 is covered

(4) 25 yard ranges

- 1 is covered

(4) 50 yard ranges

- 1 is covered

(2) 100 yard ranges

- 1 is covered

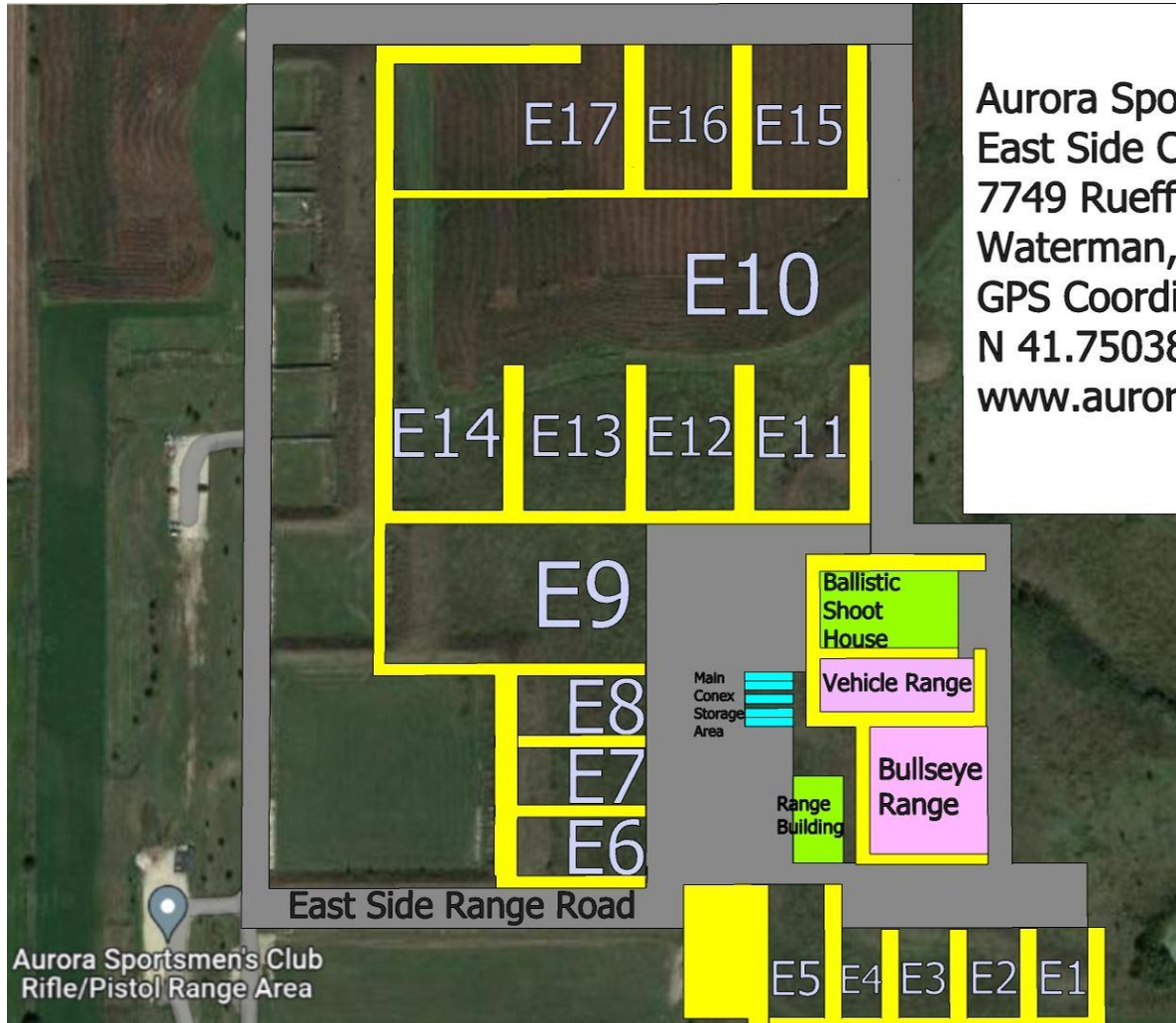
200 yard range

- ½ is covered

600 yard range

- ½ is covered
- 3 story Conex tower with multiple shooting positions
- Range Building centered.

East Side Rifle/Pistol Ranges



Aurora Sportsmen's Club
East Side Complex Map
7749 Rueff Road
Waterman, IL 60556
GPS Coordinates:
N 41.75038 W 88.79677
www.aurorasc.org



Yellow: Earthen Berms
Grey: Gravel Surfaces
Shooting Bays
E1-E4: 25 Yards Deep
E5: 50 Yards Deep
E6-E8: 30 Yards Deep
E9: 100 Yards Deep
E10: 200 Yards Deep
E11-E16: 50 Yards Deep
E17: 100 Yards Deep

Getting Around the Club

- Wear your Club ID, bring your key.
- The metal key opens privies & backup manual gate.
- Electronic keycard works on gates, office, and all range buildings. * The metal key will not work on them.
- Report any loss ASAP
- No snowmobiles, dirt bikes or 4-wheelers.
- Keep speed down – don't kick up dust.
- Do not go off gravel, or around gates and barriers.

If you get stuck - AMK Autobody towing, Waterman,
IL 815-264-7914

Getting Around the Club

- Check calendar for open to public events.
- Pull up, hold card by reader. Gate will open automatically.
- Pull in.
- No Tail Gating
- Gate will automatically close behind you.
- Gate opens automatically for exit.



Club Offices

- Wheelchair accessible office and meeting room
- First aid kit, fire extinguishers and telephone
- Waiver and hours sign in, activity flyers, mailboxes
- Bookkeeper's, Membership and President's offices



General Club Rules

- ✓ Being on Club private property implies consent to follow all Club rules.
- ✓ Everyone must read and follow the Range Safety Rules.
- ✓ Members must abide by the ASC Constitution. Members and guest must comply with state and federal laws.
- ✓ Open shooting is different from a Special Event/Class.
- ✓ No alcohol or illegal drugs on the property. Persons who appear to be impaired must leave the property.
- ✓ You are responsible for yourself, your guests and family members.
- ✓ Concealed Carry is allowed with valid IL Carry License.
- ✓ Hunting and fishing require all applicable state and federal licenses/stamps.

General Club Rules

ASC Shooting Hours

**8:00 am to 30 min after legal
sunset Monday-Saturday.**

**8:00 am until legal sunset on
Sunday.**

Honor Systems and Courtesy

- We're all in this together.
- Treat everyone with respect.
- Check the Club Calendar before you come.
- Leave everything better than you found it.
- Put fees in the honor boxes.
- Obey rules, signs and speed limits.
- Respect our neighbors.
- Wear your badge in-town!

Range Buildings

The new Rifle/Pistol and Shotgun buildings are usable by all members. Access can be granted with key cards.

West Range, East Range and Shotgun Sports Shooting Complexes are 4300-sq-ft buildings with:

- Climate controlled
- Restrooms & vending machines
- Classroom/gathering area
- Handicap Accessibility
- 48- x 56-foot garage/storage area
- Honor box, targets and waivers
- **An automated external defibrillator (AED) is currently located in the Rifle/Pistol building.**

Follow the club newsletter, social media, and attend membership meetings for information on future club developments and plans.



Privy/Outhouse on Sporting Clays

- Only liquid and semi solid waste! NO TRASH!
- Waiver book, fire extinguisher, minimal first aid kit
- Bulletin boards
- Honor boxes (wristband money.)



SAFETY & SECURITY DEPARTMENT

Range Officers

- Range Officers NOT on duty 100% of the time
- NRA Certified Range Safety Officers
- Trained in customer service
- They help us safely enjoy the facilities.
- Follow their instructions.
- Help them with emergencies.
- ROs have waiver forms, extra guest wristbands & cell phone.
- Ask them for help when you need it.
- Volunteer to be a Range Officer.

SAFETY & SECURITY DEPARTMENT

Emergency Response Team

- Emergency medical training
- Work various events such as Action Shooting Sports
- Staff large public functions
 - Multiple Aid Stations
 - Roving Patrol
 - Kubota Outfitted with AED, Trauma Bag & Litter
 - AED located in the Range Buildings
 - Life Flight Helo support
- Conduct First Responder training for club members

SAFETY & SECURITY DEPARTMENT

Security Team

- Law enforcement trained
- Staff large public functions

Safety for All Ranges

- ✓ **Read and follow the Range Safety Rules.**
 - ✓ Follow directives given by Range Officers.
 - ✓ Use medical box contents for emergencies.
 - ✓ Unsafe condition? Cease firing and close the range until it is safe to reopen it.
 - ✓ Eye/Ear protection - 30ft of shooting positions.
 - ✓ Treat all firearms as if they are loaded.
 - ✓ Muzzles in a safe direction **ALL THE TIME.**
 - ✓ Finger out of trigger guard until ready to shoot.
 - ✓ Know firearm, ammunition, target and beyond.
 - ✓ An **orange cone** in front of you always means that the range is closed.
- You are responsible for where your bullet/shot/arrow goes.**



Rifle/Pistol Range - Open Shooting

- ✓ No uncased/unholstered guns in parking lots. Uncase only on a “hot” range.
- ✓ When not being fired, firearms must be visibly safe (muzzle in safe direction, unloaded/mag out, action open, chamber flag.)
- ✓ Only members with certifications: draw from a holster, shoot at 201-600 yards, or shoot canons/mortars/artillery.
- ✓ Only members may “move and shoot.”
- ✓ Approved targets: **paper, clay pigeons, balloons, plastic bottles, fruit and veggies**, and **commercially manufactured** reactive (steel, self-sealing, plastic, spinner) targets.
 - No pictures or likenesses of actual persons.
 - No: explosives, glass, cans, boxes.
- ✓ **Rounds must impact the back berm on the fly.**

Rifle/Pistol - Unsafe Muzzle Directions

NO



YES



NO



Rifle/Pistol Range

- All legal firearms/ammo/calibers permitted except: no full auto, no tracers, no incendiary devices.
- Elevated member-owned target holders, prone, sitting, standing, kneeling allowed.
- Don't use birdshot where there are wood frames.
- Mount targets between uprights and cross boards.



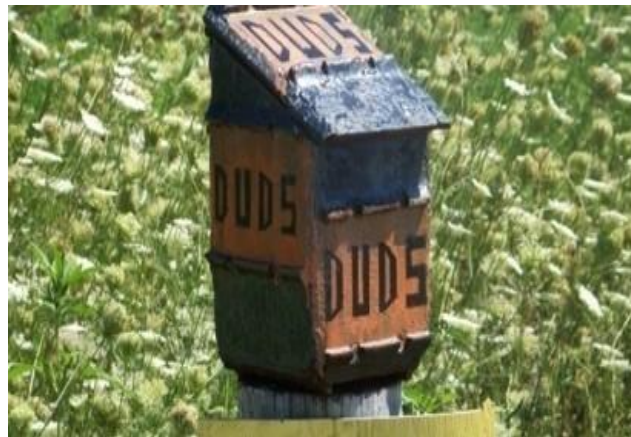
Rifle/Pistol Range

- Keep all four tires **on the gravel**.
- Unload if desired, then park in a parking lot.
- Drive down 200yd only when ground is dry and chain is down.
- No parking on the road, turnaround T, grass or mud.



Rifle/Pistol Range Courtesy

- Remove your targets and debris.
- Pick up litter, take it home or put in the dumpster.
- Put duds in the dud box.
- Pick up brass and put into metal cans.



Archery

- ✓ Acquire your target before drawing your bow.
- ✓ Know your target and what is beyond it.
- ✓ Use an orange cone when you go down range.
- ✓ No broad head points on Club targets.
- ✓ Guests require waiver and wristband.



Shotgun Sports



- Sporting Clays – Self-Serve. No special key or training required.
- Trap/skeet/5-Stand staffed on weekends.
- Trap and Skeet can be self-serve with instruction/key from Shotgun Dept.
- Target loads 7 1/2 - 9 shot, steel or lead.
- No slug guns, rifles or pistols fired in Shotgun areas.
- Honor Boxes: Trap, Skeet, Sporting Clays. Pay for clays thrown.
- Pick up hulls.
- Guns can be uncased at vehicle. Carry shotguns empty and action showing.

Shotgun Ranges - Safe Carry

NO



YES



NO



YES



Shotgun Sports



- Hand operated throwers at east side of field.
 - Bring your own clays.
 - Read rules for safe use instructions.
 - Guest wristbands required.
-
- Patterning board frame east of the hand thrower area.
 - Shot size up to 2 permitted on patterning board range.

Ponds

- No swimming or wading.
- Bass, redear, crappie, bluegill, sunfish, channel cat, neutered carp.
- Do not place fish into any pond.
- Only boats hand carried (trolling motors allowed)



Capital Improvements

Range Buildings

The new Rifle/Pistol and Shotgun buildings are usable by all members. Access can be granted with key cards.

West Range, East Range and Shotgun Sports Shooting Complexes are 4300-sq-ft buildings with:

- Climate controlled
- Restrooms & vending machines
- Classroom/gathering area
- Handicap Accessibility
- 48- x 56-foot garage/storage area
- Honor box, targets and waivers
- **An automated external defibrillator (AED) is currently located in the Rifle/Pistol building.**



Follow the club newsletter, social media, and attend membership meetings for information on future club developments and plans.

QUESTIONS?

- Are dues and assessments the same thing?
- Who has to read the Range Safety Rules?
- Where can we get guest waiver forms?
- Can we shoot at cans?
- Who is allowed to draw from a holster?
- Can we use a “high ready” handgun position?
- Who is allowed to shoot the 600 yard range?
- Where should rifle/pistol targets be mounted?
- Are sporting clays, trap or skeet fees included in the membership dues?

What's Next?

Schedule Board Member Interview

- ☐ Send email to ready4interview@aurorasc.org
- ☐ Enter your name as submitted on application in the Subject Line of email
- ☐ In the body of the email, please indicate call time preference e.g. Morning, Afternoon, Evening, or Anytime
- ☐ Wait for Interview phone call